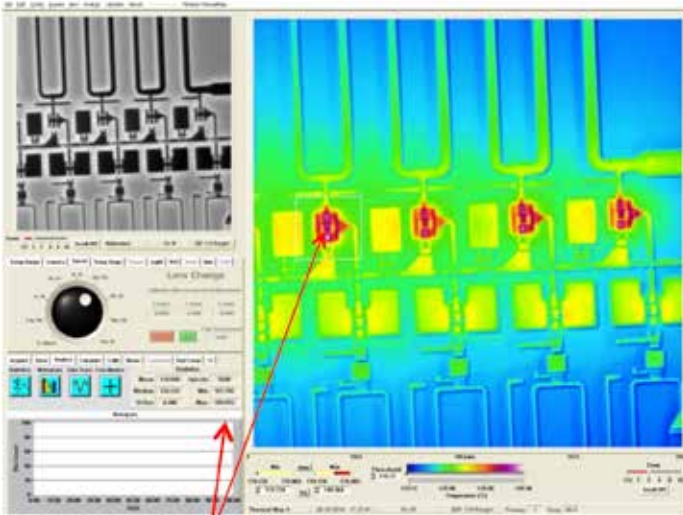


PICTURE BOOK

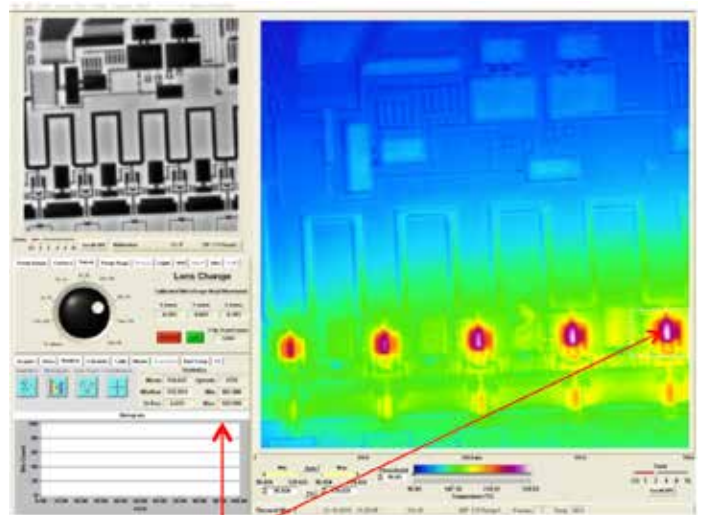
# Thermal Mapping at EAG

Temperature measurements of RF transistors used to examine the temperature distribution and look for areas of heating issues on many types of devices.

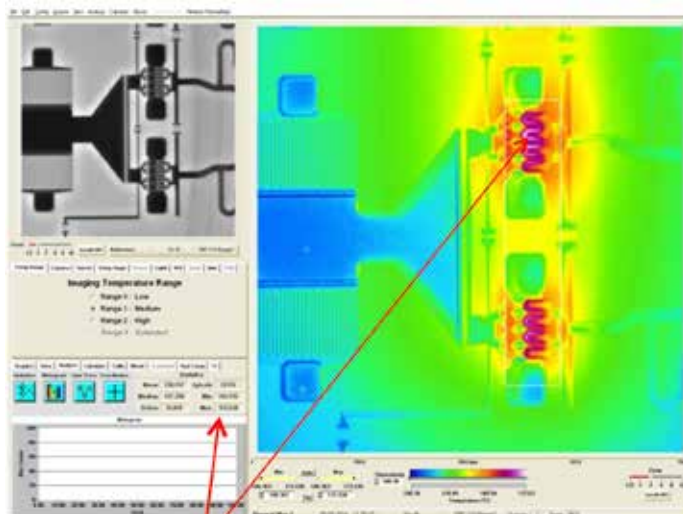
## Temperature maps of RF transistors



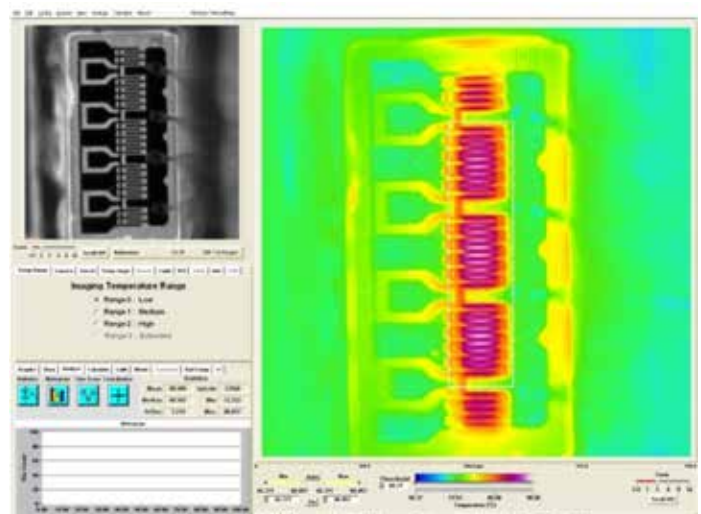
Max temp



Max temp

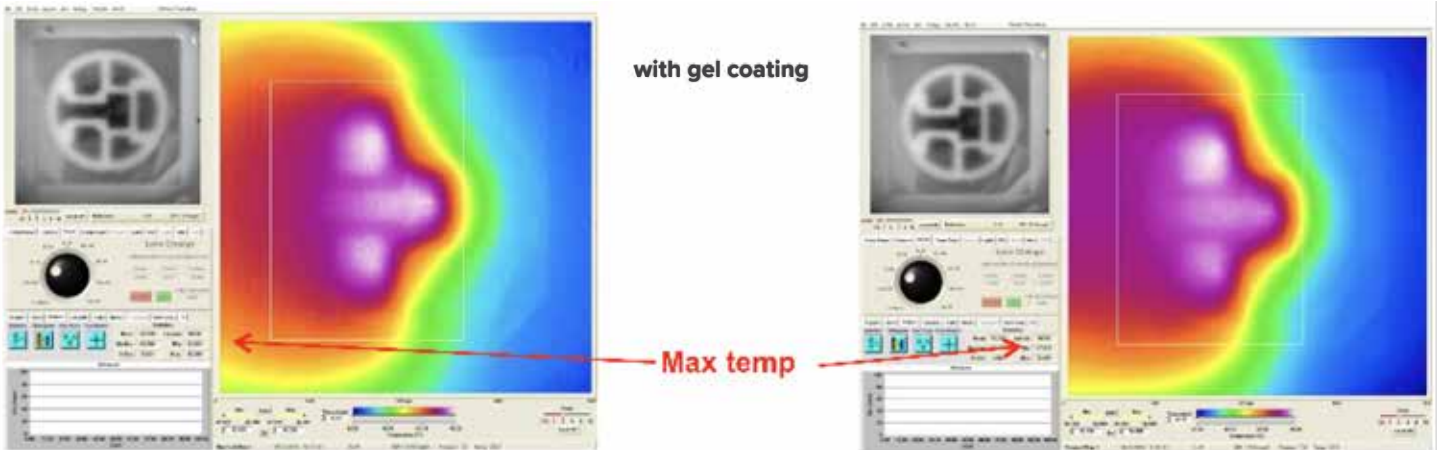


Max temp

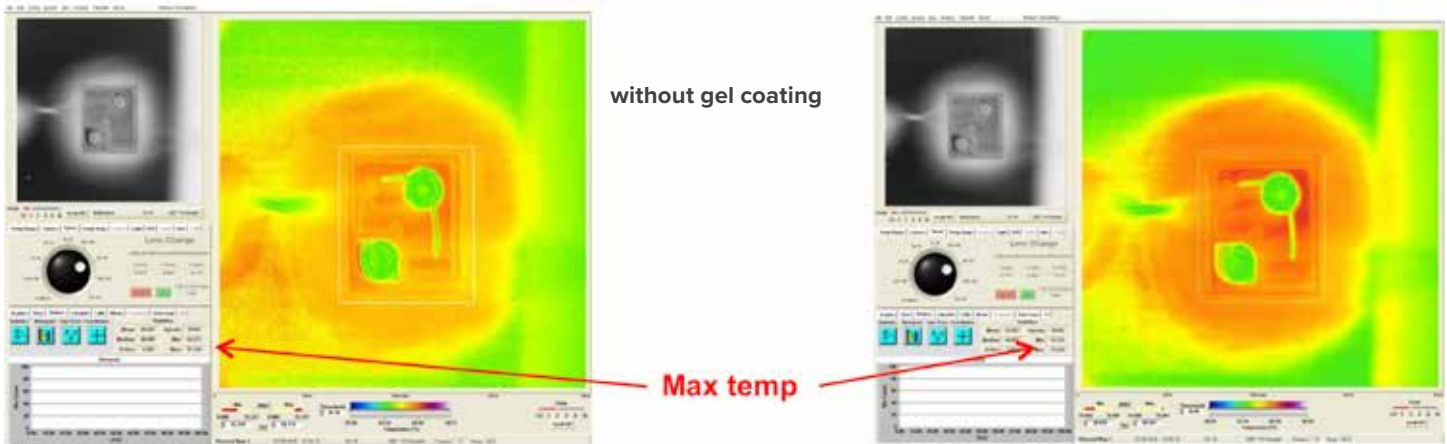


# Thermal Mapping at EAG

Thermal maps of LEDs as received and with the gel coating removed



40 mA = LED current = 100mA



50 mA = LED current = 100mA