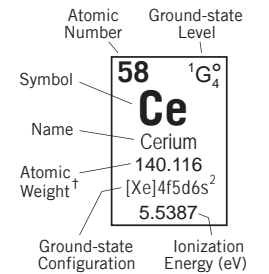
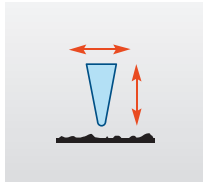


Period	1																	18															
		1																	2														
		1A																	VIIIA														
	1	1																	2														
	2	3	4											13	14	15	16	17	18														
		1A	2											IIIA	IVA	VA	VIA	VIIA	VIIIA														
		1	2											5	6	7	8	9	10														
2	3	4											13	14	15	16	17	18															
	1A	2											IIIA	IVA	VA	VIA	VIIA	VIIIA															
3	11	12											13	14	15	16	17	18															
	1A	2											IIIA	IVA	VA	VIA	VIIA	VIIIA															
4	19	20	21	22	23	24	25	26	27	28	29	30	31	32	33	34	35	36															
	1A	2	3	4	5	6	7	8	9	10	11	12	13	14	15	16	17	18															
	1A	2	IIIB	IVB	VB	VIB	VIIIB	VIIIB	VIIIB	VIIIB	IB	IIB	IIIA	IVA	VA	VIA	VIIA	VIIIA															
5	37	38	39	40	41	42	43	44	45	46	47	48	49	50	51	52	53	54															
	1A	2	3	4	5	6	7	8	9	10	11	12	13	14	15	16	17	18															
	1A	2	IIIB	IVB	VB	VIB	VIIIB	VIIIB	VIIIB	IB	IIB	IIIA	IVA	VA	VIA	VIIA	VIIIA	VIIIA															
6	55	56	Lanthanides																72	73	74	75	76	77	78	79	80	81	82	83	84	85	86
	1A	2																	IIIB	IVB	VB	VIB	VIIIB	VIIIB	VIIIB	IB	IIB	IIIA	IVA	VA	VIA	VIIA	VIIIA
	1A	2	IIIB	IVB	VB	VIB	VIIIB	VIIIB	VIIIB	IB	IIB	IIIA	IVA	VA	VIA	VIIA	VIIIA	VIIIA															
7	87	88	Actinides																104	105	106	107	108	109	110	111	112	113	114	115	116	117	118
	1A	2																	IIIB	IVB	VB	VIB	VIIIB	VIIIB	VIIIB	IB	IIB	IIIA	IVA	VA	VIA	VIIA	VIIIA
	1A	2	IIIB	IVB	VB	VIB	VIIIB	VIIIB	VIIIB	IB	IIB	IIIA	IVA	VA	VIA	VIIA	VIIIA	VIIIA															
	1A	2	IIIB	IVB	VB	VIB	VIIIB	VIIIB	VIIIB	IB	IIB	IIIA	IVA	VA	VIA	VIIA	VIIIA	VIIIA															

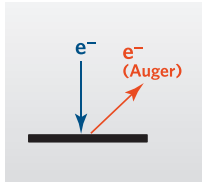
- Solids
- Liquids
- Gases
- Artificially Prepared



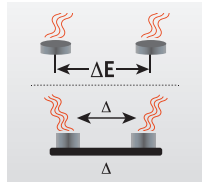
AFM



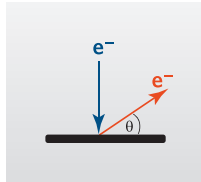
Auger



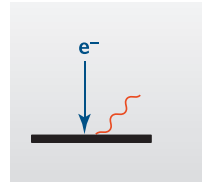
DSC & DTA



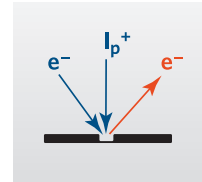
EBSD



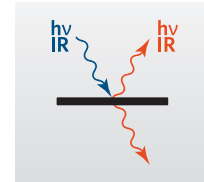
EDS



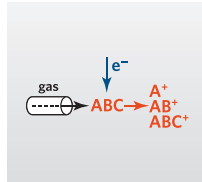
FIB



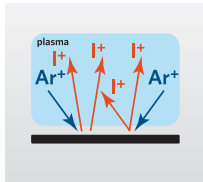
FTIR



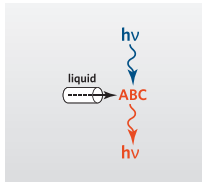
GC-MS



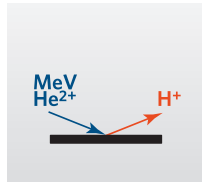
GDMS



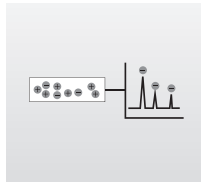
GPC



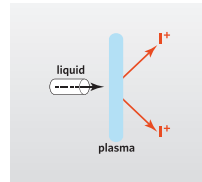
HFS



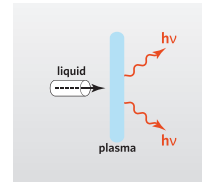
IC



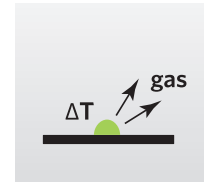
ICP-MS



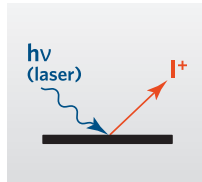
ICP-OES



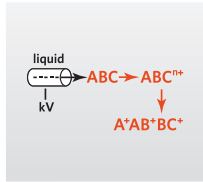
IGA



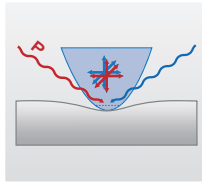
LA-ICPMS



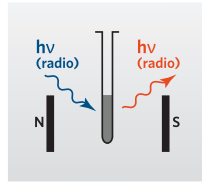
LC-MS



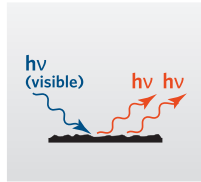
Nanoindentation



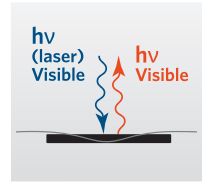
NMR



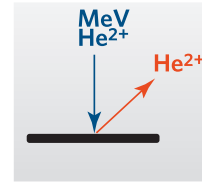
OP



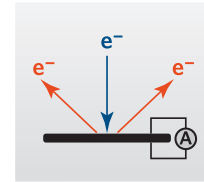
Raman



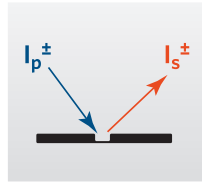
RBS



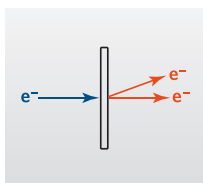
SEM, EBIC



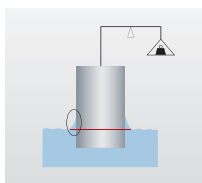
SIMS



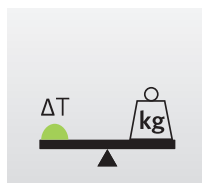
TEM



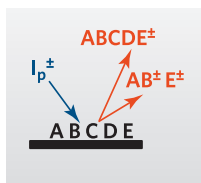
Tensiometry



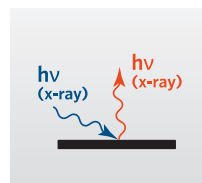
TGA



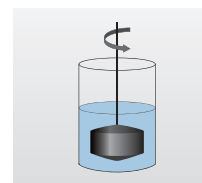
TOF-SIMS



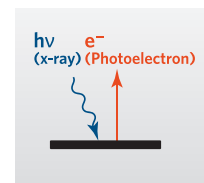
TXRF, XRF



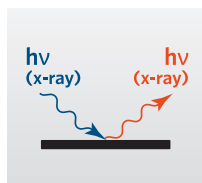
Viscometry



XPS



XRD, XRR



For a complete listing of our techniques, please visit
www.eag.com/materials-sciences

+1 800 366 3867