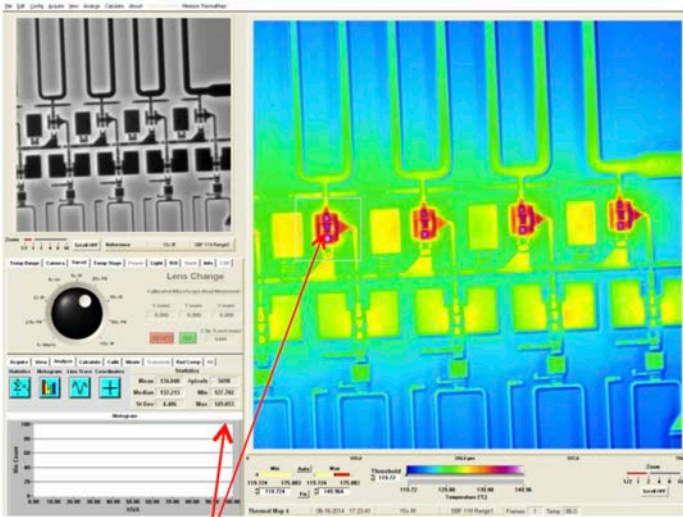


PICTURE BOOK

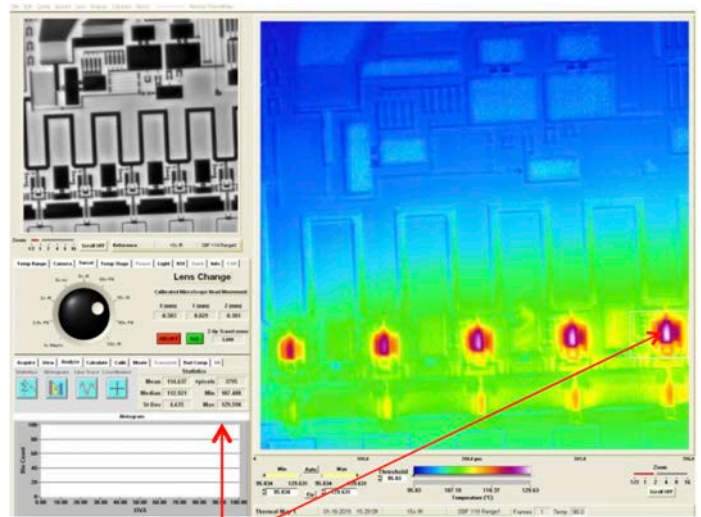
Thermal Mapping at EAG

Temperature measurements of RF transistors used to examine the temperature distribution and look for areas of heating issues on many types of devices.

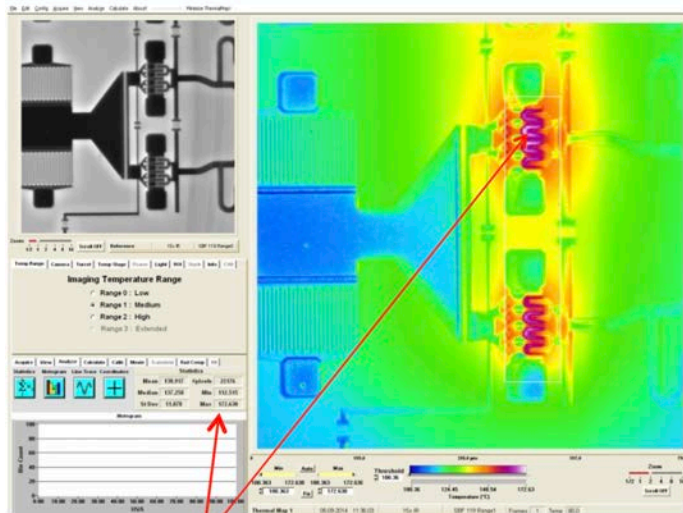
Temperature maps of RF transistors



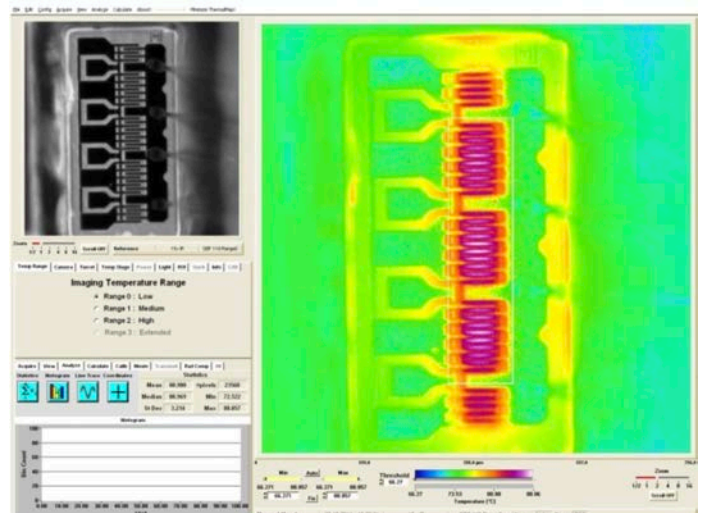
Max temp



Max temp

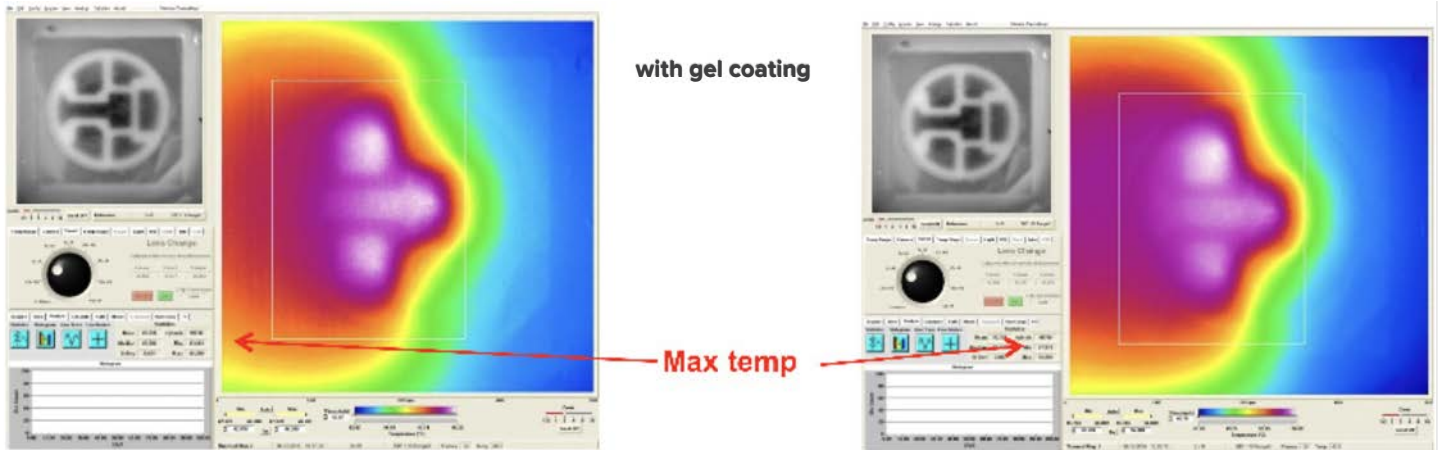


Max temp

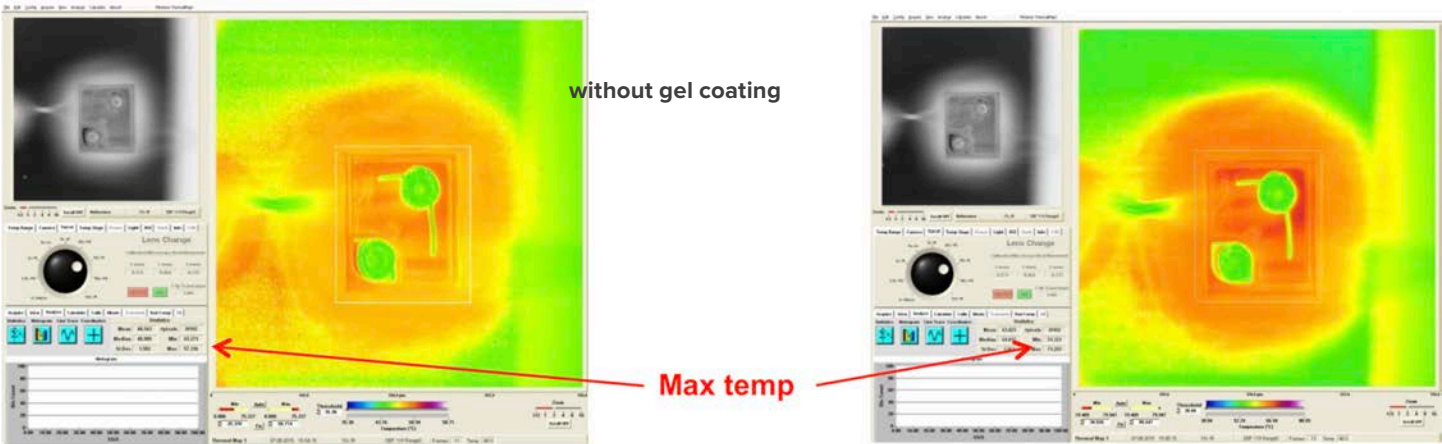


Thermal Mapping at EAG

Thermal maps of LEDs as received and with the gel coating removed



40 mA = LED current = 100mA



50 mA = LED current = 100mA